



**UPLINKROBOTICS**



**@UPLINKROBOTICS**



**@UPLINKROBOTICS**



**SUPPORT@UPLINKROBOTICS.COM**

**COPYRIGHT © 2023 UPLINKROBOTICS LLC**

# **MARTEN QUICK-START GUIDE**



**UPLINK ROBOTICS  
INSPECTION  
CRAWLER**



**UPLINKROBOTICS**

# TABLE OF CONTENTS

- 02 IMPORTANT USER INFO
- 03 CRAWLER OVERVIEW DIAGRAM
- 04 CRAWLER REAR DIAGRAM, TRANSMITTER DIAGRAM
- 05 TRANSMITTER DIAGRAM, VIDEO MONITOR DIAGRAM
- 06 CHARGING INSTRUCTIONS
- 07 QUICK START INSTRUCTIONS
- 08 TAKING PICTURES & VIDEOS, POWERING OFF CRAWLER
- 09 BATTERY PACK PICTURE
- 10 USING WIFI & RUNCAM APP
- 11 SAVING PICTURES & VIDEO INSTRUCTIONS
- 12 SAVING DVR ON MONITOR, AUXILIARY MOUNTING POINTS



**MARTEN  
QUICK GUIDE  
ON YOUTUBE**



**MARTEN EXAMPLE  
PHOTO #1**





## IMPORTANT USER INFORMATION:

### IMPORTANT:

BY USING THIS PRODUCT YOU AGREE THAT YOU HAVE READ THE FOLLOWING LIST OF GUIDELINES AND WILL FOLLOW ALL INSTRUCTIONS OUTLINED IN THIS QUICK GUIDE:

---

1. Peel film off camera lens before use
2. Charge Crawler Battery and Video Monitor before use
3. Always turn the transmitter ON FIRST and OFF LAST \*
4. Never Operate the Video Monitor without Antennas
5. Never leave the device unattended while turned on
6. Never leave the transmitter or video monitor on while unattended
7. Never leave the device on after the battery indicator reports zero bars
8. Never use or store the device in an environment under 32°F or over 120°F
9. Never operate the device in wet conditions, or spray the device with any fluid
10. Never use or charge the Crawler battery if it has any physical damage or has been discharged past zero bars on the battery indicator
11. Never continue to try to drive the crawler if one or more wheels is caught and unable to turn

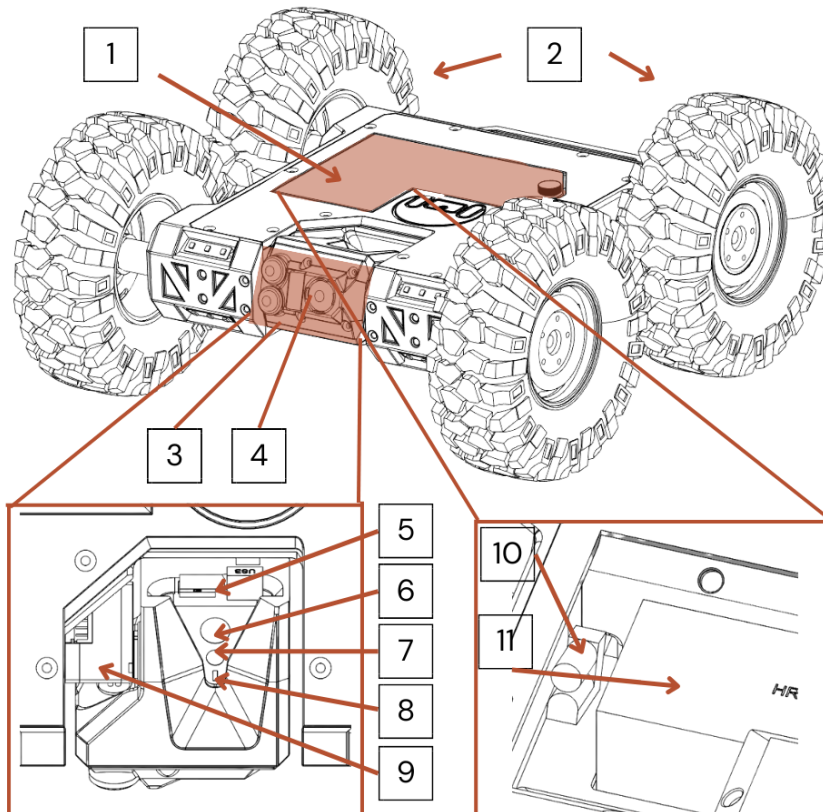
\* YOU MAY NOT HAVE CONTROL OVER THE DEVICE IF THE TRANSMITTER IS OFF

\*TURN CONTROLLER ON BEFORE CRAWLER

# CRAWLER OVERVIEW DIAGRAM:

## Legend:

- |                                |                                       |
|--------------------------------|---------------------------------------|
| 1. Thumbscrew Lid              | 8. Camera WiFi Indicator LED          |
| 2. All Terrain Tires           | 9. Rotatable Camera Servo             |
| 3. Front LED Lights            | 10. Battery Connector                 |
| 4. 4K Camera                   | 11. 5200mAh 11.1v 60c Crawler Battery |
| 5. Micro SD Card Slot          |                                       |
| 6. Camera Power/Shutter Button |                                       |
| 7. Camera WiFi Button          |                                       |



3

## SAVING DVR ON THE VIDEO MONITOR:

1. Ensure the video monitor is **powered off** and the screen is **blank**.
2. Insert a **micro SD** card into the **SD card slot** on the left of the video monitor
3. Power on the video monitor by holding the power button until the screen turns on.
4. The **REC button** can now be used to start and stop recording what is seen on the screen. **Recording** is indicated by a **red dot** in the top center of the screen.
5. When done, ensure the DVR is not currently recording, power off the video monitor by holding the power button until the screen goes blank.
6. You may now remove the micro SD card and find the videos in the folder:
  - a. **DCIM -> 10xDSCIM.**

## FRONT AND REAR AUXILIARY MOUNTING POINTS:

This crawler has **auxiliary mounting locations** on the **front** and **rear** for future expansion and add-ons to the crawler. The mounting pattern is as follows:



12



## SAVING PICTURE AND VIDEO INSTRUCTIONS:

### Using the Micro SD card in the Camera:

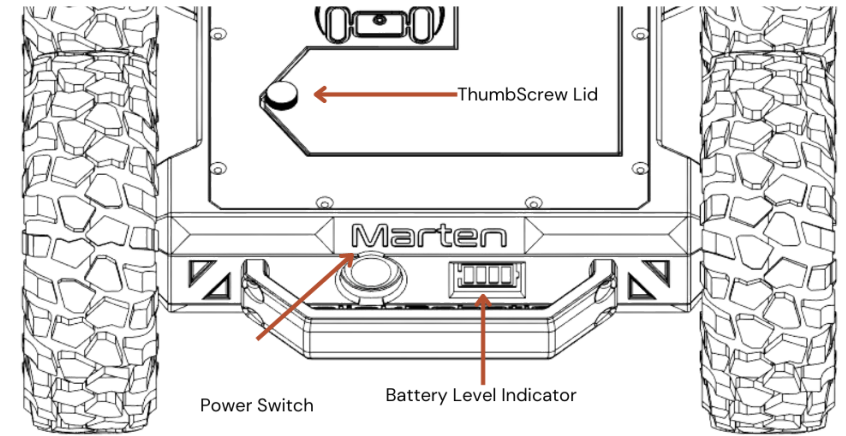
1. Turn off the power switch on the back of the Crawler.
2. Remove the **Micro SD card** from the back of the **orange 4K camera**.
3. Download the image/video contents from the **Micro SD card**

They will be in the folder **DCIM -> 100RUNCAM**

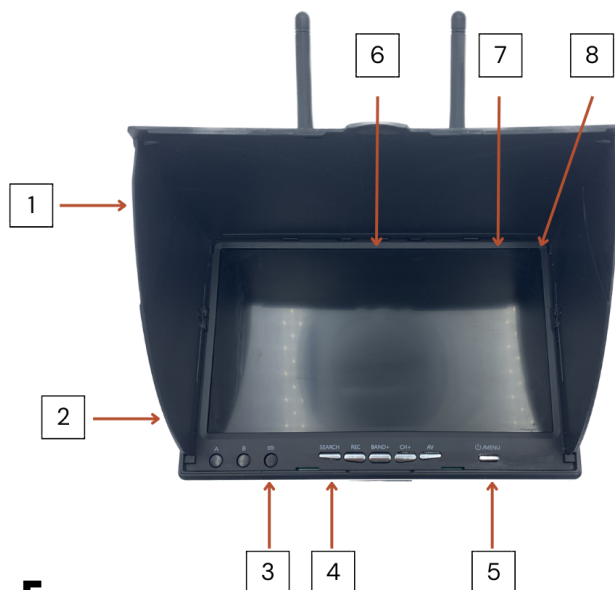
When **completed**, reinsert the Micro SD card into the back of the **orange** 4K camera.



## CRAWLER REAR DIAGRAM:



## TRANSMITTER DIAGRAM:



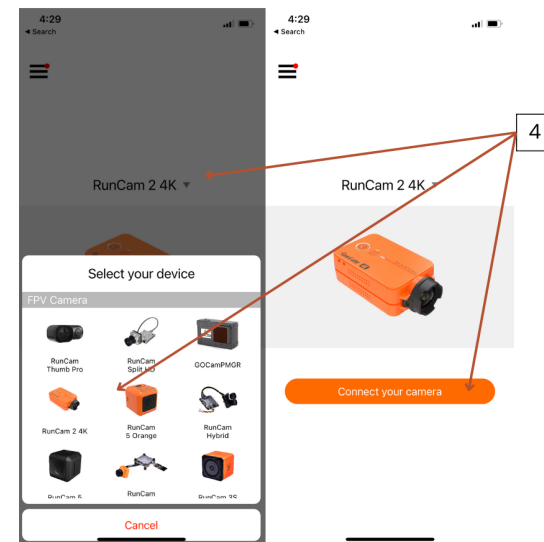
### Legend:

1. TF Card (Micro SD Card Slot)
2. Charging Port
3. Charging Status LED
4. Search Button
5. Power/Menu Button
6. DVR Recording Indicator
7. Monitor Battery Level
8. Camera Recording Indicator

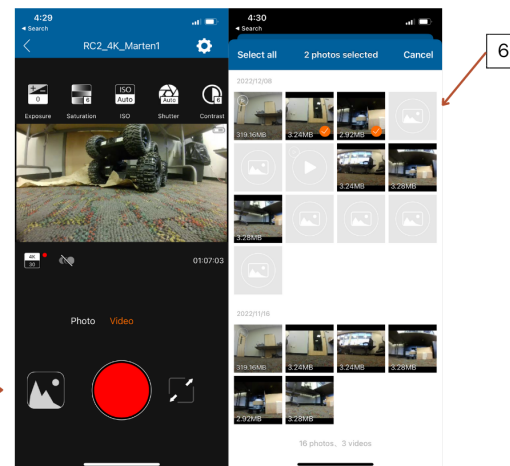
5

## USING WIFI & THE RUNCAM APP TO SAVE PICTURES & VIDEOS:

1. Download the **Runcam App** from the IOS App Store or Google Play Store.
2. Turn on the Crawler and press the WiFi button on the **orange 4K camera**. The **Blue LED WiFi indicator** should blink.
3. Connect your device to the camera's WiFi network named **RC2\_4K\_MartenXXXX** (XXXX is your Crawler's production number), using the password **1234567890**. The WiFi indicator on the camera turns **solid blue** when connected.



4. Open the Runcam App and choose **RunCam 4K** from the dropdown menu, then tap connect your camera.
5. Access the **album button** at the bottom left and then the **album word** at the top right.
6. Select **images** and download them to your device using the download symbol at the **bottom right**.



10





## CHARGING INSTRUCTIONS:

### TRANSMITTER:

The transmitter takes **4 AA batteries** that are inserted in the back under the removable battery tray that slides down and off. The supplied batteries **cannot** be recharged and should be **replaced** once the battery indicator in the top **right of the screen** reaches zero.

### CRAWLER BATTERY:

The supplied **5200mAh 11.1 60C battery** should be charged only using the supplied battery charger. This charger is connected using the balance charging port on the battery. When the battery is plugged in, the charging LED will be **RED** and then turn **GREEN** once the battery is fully charged.

### VIDEO MONITOR:

Plug in the included charger into the Charging Port on the **right** of the **charger**. The Charging Status LED will turn **Green** when complete.

**\*Note: LiPo batteries are extremely hazardous if charged incorrectly. Only charge with the included charger. Do not charge if there is any physical damage to the battery or charger.**



AA Battery Tray

XT60 Power Connector

Balance Charging Connector

Balance Charger

Charging LED



## QUICK START INSTRUCTIONS:

**NOTE: NEVER OPERATE THE MARTEN CRAWLER IF THE BATTERY LEVEL INDICATOR DOES NOT HAVE ANY BARS ACTIVE. OPERATION AFTER THE INDICATOR REPORTS ZERO BATTERY WILL DAMAGE THE CRAWLER BATTERY.**

1. Turn on the transmitter using its power switch on the **right** of the screen.
2. Set all switches to the up position and move the **left camera control stick** to the **lowest position**.
3. Open the **thumbscrew lid** on the Marten Crawler, connect the provided crawler battery using the **XT60 connector**, and tuck the wire as necessary.
4. **Insert** the battery into the slot and **close** the thumbscrew lid.
5. For saved pictures/videos, make sure the orange 4K camera has a **micro SD card** inserted.
6. Turn on the crawler by using the power switch at the back: you can now **control** the crawler.
7. Use the **right** drive stick to move the crawler.
8. Employ the **left camera control stick** to adjust the camera angle.
9. Activate or deactivate the LEDs with the top left LED switch on the transmitter.
10. Check that the **orange 4K camera's power switch** is **blue**, indicating it's on. If not, hold the switch until the camera beeps to turn it on. If the **blue** light blinks, there's **no SD card detected**.
11. Tighten the antennas on the video monitor, and power up the **video monitor** by holding the button until the screen **lights up**. If no video appears, press the **search button** and wait for it to connect to the crawler.

*If the rotatable camera does not tilt with inputs from the transmitter, turn the Crawler off and start back at Step 1. The transmitter must be powered on and in the ready state before the Crawler is powered on for the camera gimbal to work properly.*

## TAKING PICTURES & VIDEOS:

1. When powered on, the crawler starts in **video mode**.
2. To switch from **video mode** to **picture mode**:
  - a. Make sure it's **not recording**.
  - b. Quickly flip the camera shutter switch **down** and then **back up twice**.
  - c. Camera light will be **green**.
3. To switch from **Picture Mode** to **Video Mode**:
  - a. Quickly flip the camera shutter switch **down** and then **back up twice**.
  - b. The chosen video settings appear at the **bottom** of the monitor.
4. To capture a **picture or video**, flip the camera shutter switch **down** and then **back up**.
  - a. Video recording is indicated by a **red light** in the top right of the monitor.
  - b. After taking a picture, the screen briefly goes blank. Avoid moving or tilting the Crawler during this time for clear results.

## POWERING OFF THE CRAWLER:

1. Ensure the Crawler is not recording video as indicated by a **red** dot in the **top right** of the video monitor. If it is still recording when you turn it off, the video can be corrupted.
2. **Turn off the Crawler first**, then turn off the **video monitor** by holding the power button until the screen goes blank.
3. Now turn off the transmitter with the power switch on the **bottom right**.

Failing to Turn off the Power Switch on the Crawler after use **will damage the battery**. Always turn the Marten Crawler Power Switch to off when not in use.